

Name: _____

BennettMaths AQA 1H – Part 1

Answer **all** questions in the spaces provided.1 (a) Work out 0.3×0.2

[1 mark]

Answer _____

1 (b) Work out $\frac{4}{5} \div 7$

[1 mark]

Answer _____

1 (c) Work out $16 \div 0.2$

[1 mark]

Answer _____

2 Solve $5x < 60$

[1 mark]

Answer _____

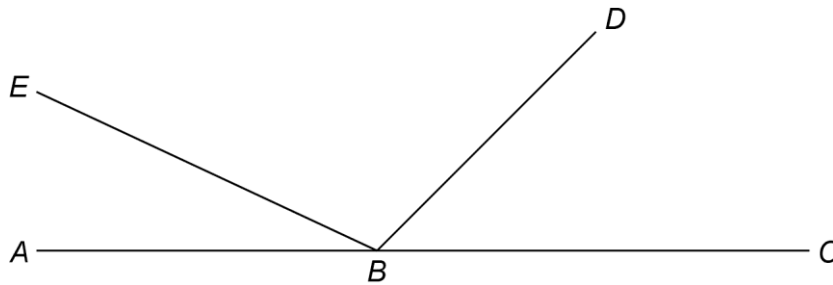
3 Work out the value of $\left(\frac{5}{3}\right)^2$

Give your answer as a mixed number.

[1 mark]

Answer _____

4 ABC , BD and BE are straight lines.



Not drawn
accurately

angle $EBD = 6 \times \text{angle } ABE$

angle $DBC = 3 \times \text{angle } ABE$

Work out the size of angle DBC .

[3 marks]

Answer _____°

- 5** Two prime numbers are multiplied together.
The answer is an **even** number between 40 and 50
Complete the calculation.

[3 marks]

$$\square \times \square = \square$$

- 6** Chloe and Mikey share some money in the ratio 3 : 4
Mikey gets £72

Chloe gives $\frac{1}{6}$ of her share to Pippa.

Mikey gives $\frac{4}{9}$ of his share to Pippa.

How much money does Pippa receive?

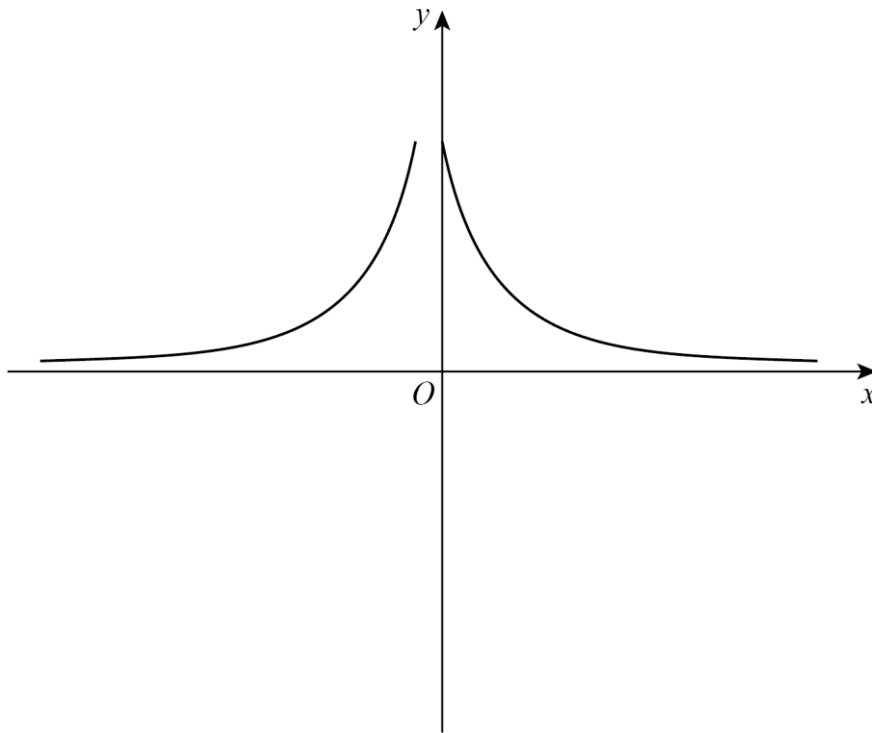
[4 marks]

Answer £ _____

Turn over for the next question

9

Erika tries to sketch the graph $y = \frac{1}{x}$ with $x \neq 0$



Make **two** different criticisms of her sketch.

[2 marks]

Criticism 1 _____

Criticism 2 _____

[5 marks]

Answer _____

Turn over for the next question